

Commitment to Keeping Youth Healthy.

2020 South Carolina Teen Birth Trends

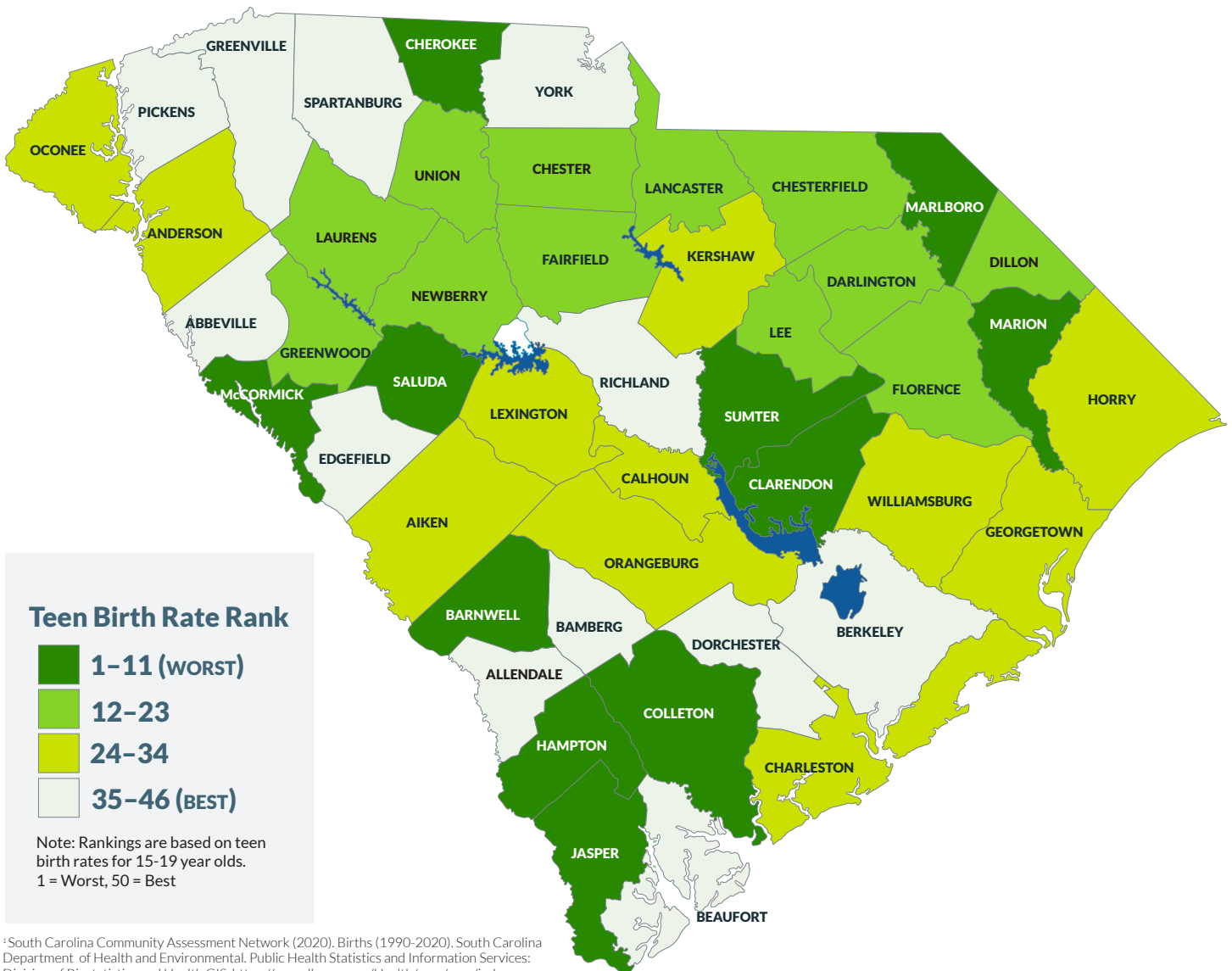


South Carolina’s teen birth rate has declined 73% since peaking in 1991, continuing decades of success for communities across the state. Most significantly, the teen birth rate in South Carolina decreased by 11% between 2019 and 2020. This makes the teen birth rate for 15-19 year olds 19.3 per 1,000 females¹.

From 2019-2020, Hispanic teens (15-19) were the only teen demographic to experience an increase. Black teens experienced a 7% decrease and white teens experienced a 20% decrease. Since 2002, Hispanic teens have had the highest teen birth rates, with rates consistently above the state rate and rates of white and Black teens.

These disparities are potentially accounted for by structural barriers that create higher rates of poverty and unemployment, and lower education levels among people of color.² Poverty and unemployment can lead to an inability to pay for medical care, which limits access to preventative care including contraceptives and education about sexual health with medical providers.

Through resources such as this, Fact Forward encourages communities and youth-serving professionals to not only engage in conversation about the ranking of teen births in South Carolina counties, but also address the social determinants of health that influence unintended teen births in our state.



¹South Carolina Community Assessment Network (2020). Births (1990-2020). South Carolina Department of Health and Environmental. Public Health Statistics and Information Services: Division of Biostatistics and Health GIS. <https://apps.dhec.sc.gov/Health/scan/scan/index.aspx>.

²Sales, J.M., Newton-Levinson, A., Swartzendruber, A.L. (2020). Racial Disparities in STIs Among Adolescents in the USA. In: Hussen, S. (eds) Sexually Transmitted Infections in Adolescence and Young Adulthood. Springer, Cham. https://doi.org/10.1007/978-3-030-20491-4_3



2020 Teen Birth Rates and Numbers by Age Group

Rank Based on ages 15-19	County	Ages 15-19		Ages 15-17		Ages 18-19	
		Number	Rate	Number	Rate	Number	Rate
1	Hampton	25	47.3	5	15.8	20	94.3
2	Colleton	45	42.3	12	18.8	33	77.6
3	Jasper	31	42	6	13.5	25	84.7
4	Marlboro	23	35.3	5	12.8	18	69.2
5	McCormick	5	34.5	1	11.5	4	69
6	Saluda	17	34.3	4	13.4	13	65.7
7	Barnwell	23	34.1	3	7.4	20	74.3
8	Sumter	108	32.9	32	16.2	76	57.9
9	Cherokee	60	32.7	12	10.9	48	65.5
10	Marion	29	32.5	7	13.1	22	61.6
11	Clarendon	28	31.5	9	16.9	19	53.5
12	Union	22	30	5	11.3	17	58
13	Lee	14	29.8	4	14.1	10	53.5
14	Darlington	63	29.4	15	11.7	48	55.9
14	Dillon	30	29.4	6	9.8	24	59
16	Florence	124	28.6	29	11.1	95	54.8
17	Fairfield	15	28	8	25	7	32.6
18	Laurens	55	27	10	8.2	45	55.2
19	Greenwood	62	25.9	12	8.4	50	52.4
20	Chesterfield	33	25.4	9	11.5	24	46.1
21	Chester	22	24.5	3	5.6	19	52.8
22	Newberry	29	23.5	7	9.5	22	44.5
23	Lancaster	57	23	18	12.1	39	39.3
24	Orangeburg	63	21.6	12	6.9	51	43.8
25	Calhoun	8	21.3	2	8.8	6	40
26	Williamsburg	18	21.2	2	3.9	16	47.2
27	Aiken	108	21	19	6.2	89	43.3
28	Georgetown	32	20.4	10	10.6	22	35.1
29	Kershaw	39	19.6	9	7.5	30	37.8
30	Anderson	123	19.4	26	6.8	97	38.2
30	Oconee	42	19.4	10	7.7	32	37
32	Lexington	169	18.7	42	7.8	127	35.2
33	Charleston	202	17.9	58	8.5	144	31.8
33	Horry	166	17.9	34	6.1	132	35.6
35	Spartanburg	186	17.7	45	7.1	141	33.5
36	Allendale	4	17.5	1	7.2	3	33.3
37	Berkeley	121	17.3	23	5.5	98	35
38	Bamberg	9	17.2	3	9.5	6	28.8
39	Greenville	260	16	64	6.5	196	30.1
40	Beaufort	77	15.1	19	6.2	58	28.5
41	Edgefield	11	15	2	4.5	9	30.7
42	Richland	227	14.2	66	6.9	161	25.2
43	Pickens	78	13.8	21	6.2	57	25.2
44	Dorchester	70	13.5	19	6.1	51	24.6
44	York	129	13.5	38	6.6	91	23.7
46	Abbeville	7	8.9	1	2.1	6	19
	South Carolina	3,069	19.3	748	7.8	2,321	36.4

Data Source: Division of Biostatistics, Public Health Statistics and Information Services, SC DHEC, 2020.

Note: Counties are ranked from worst to best teen birth rate for 15-19 year olds. Rate is calculated per 1,000 females. Rates calculated with small numbers are unreliable and should be used cautiously.