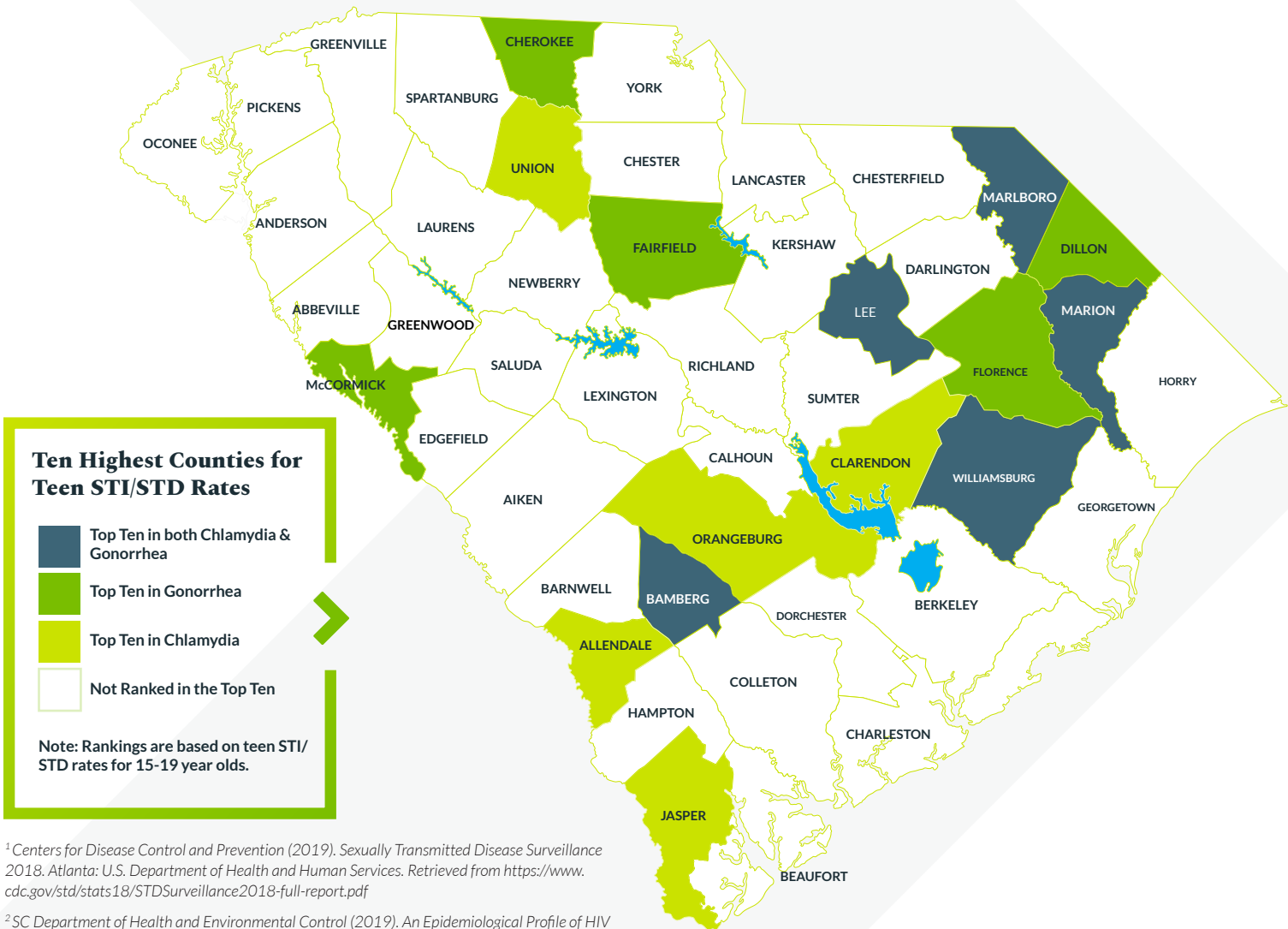


# 2019 South Carolina Teen STI/STD Rates

Although South Carolina's teen birth rate has declined by 70% since its peak in 1991, adolescents in SC are at substantial risk for contracting an STI/STD. In 2018, South Carolina was ranked 4th highest in the country for infection rates of chlamydia and 3rd in the country for gonorrhea among all ages.<sup>1</sup> Additionally, adolescents (ages 15-24) accounted for 67 percent of chlamydia cases and 53 percent of all reported gonorrhea diagnoses.<sup>2</sup> This highlights the significance of teens and adults having access to comprehensive STI/STD screening and treatment, ultimately reducing the

spread of STI/STDs in South Carolina. According to the 2019 Youth Risk Behavior Surveillance (YRBS) survey, 51 percent of sexually active South Carolina high school students reported NOT using a condom the last time they had sex.<sup>3</sup> This underscores the importance of comprehensive sexual health education that includes instruction on proper use of condoms and contraception for sexually active teens. Fact Forward encourages educators, medical professionals and parents or trusted adults to use this document to engage their community in conversation surrounding the importance of STI/STD education and prevention.



<sup>1</sup>Centers for Disease Control and Prevention (2019). Sexually Transmitted Disease Surveillance 2018. Atlanta: U.S. Department of Health and Human Services. Retrieved from <https://www.cdc.gov/std/stats18/STDsurveillance2018-full-report.pdf>

<sup>2</sup>SC Department of Health and Environmental Control (2019). An Epidemiological Profile of HIV and AIDS in South Carolina 2019.

<sup>3</sup>Underwood, M.J, Brener, N., Thorton, J. et al. (2020). Youth Risk Behavior Surveillance – United States, 2019. M MMWR Suppl 2020;69(1):1-84 Centers for Disease Control and Prevention. Retrieved from <https://www.cdc.gov/mmwr/volumes/69/su/pdfs/su6901-H.pdf>

# 2019 Chlamydia and Gonorrhea Numbers and Rates by County - Ages 15-19

COUNTY	Chlamydia			Gonorrhea		
	Cases	Rate	Rank	Cases	Rate	Rank
Abbeville	45	2717.4	36	11	664.3	32
Aiken	405	3937.8	21	108	1050.1	21
Allendale	39	7572.8	1	5	970.9	25
Anderson	333	2587.4	37	103	800.3	27
Bamberg	62	5175.3	9	17	1419	10
Barnwell	51	3722.6	25	9	656.9	33
Beaufort	295	2737.6	35	73	677.4	31
Berkeley	354	2466.9	40	78	543.6	39
Calhoun	18	2368.4	44	.	131.6	46
Charleston	812	3615.5	26	221	984	22
Cherokee	150	3865	23	56	1442.9	9
Chester	77	3969.1	20	15	773.2	28
Chesterfield	113	4072.1	19	15	540.5	40
Clarendon	109	5265.7	6	28	1352.7	13
Colleton	103	4627.1	12	31	1392.6	11
Darlington	190	4322.1	16	47	1069.2	20
Dillon	94	4534.5	14	49	2363.7	2
Dorchester	351	3293.6	30	77	722.5	29
Edgefield	38	2434.3	41	11	704.7	30
Fairfield	48	3877.2	22	25	2019.4	3
Florence	409	4634	11	175	1982.8	6
Georgetown	123	3614.5	27	41	1204.8	17
Greenville	797	2485.1	39	176	548.8	38
Greenwood	138	2897.9	31	46	966	26
Hampton	44	3802.9	24	14	1210	16
Horry	620	3345.6	28	113	609.8	35
Jasper	83	5522.3	5	18	1197.6	18
Kershaw	101	2500	38	24	594.1	36
Lancaster	138	2813.5	33	21	428.1	43
Laurens	139	3305.6	29	41	975	24
Lee	55	5258.1	7	21	2007.6	4
Lexington	440	2424	42	107	589.5	37
McCormick	13	4347.8	15	6	2006.7	5
Marion	118	6207.3	3	46	2419.8	1
Marlboro	71	4972	10	25	1750.7	8
Newberry	113	4241.7	18	26	976	23
Oconee	87	2067	45	15	356.4	45
Orangeburg	309	5201.1	8	80	1346.6	14
Pickens	187	1715.1	46	45	412.7	44
Richland	1460	4299.4	17	366	1077.8	19
Saluda	32	2794.8	34	6	524	41
Spartanburg	504	2388.4	43	136	644.5	34
Sumter	307	4543.4	13	93	1376.4	12
Union	91	5748.6	4	21	1326.6	15
Williamsburg	126	6709.3	2	37	1970.2	7
York	523	2831.9	32	96	519.8	42
<b>South Carolina</b>	<b>10857</b>	<b>3352</b>	<b>-</b>	<b>2804</b>	<b>865.7</b>	<b>-</b>

Data Source: SC Department of Health and Environmental Control (2019), SC Chlamydia and Gonorrhea Incidence Rates, Ages 15-19; 2020. HIV Surveillance and Technical Support Requested Report. Columbia, SC.

Note: Rate is calculated per 100,000 15-19 year olds.