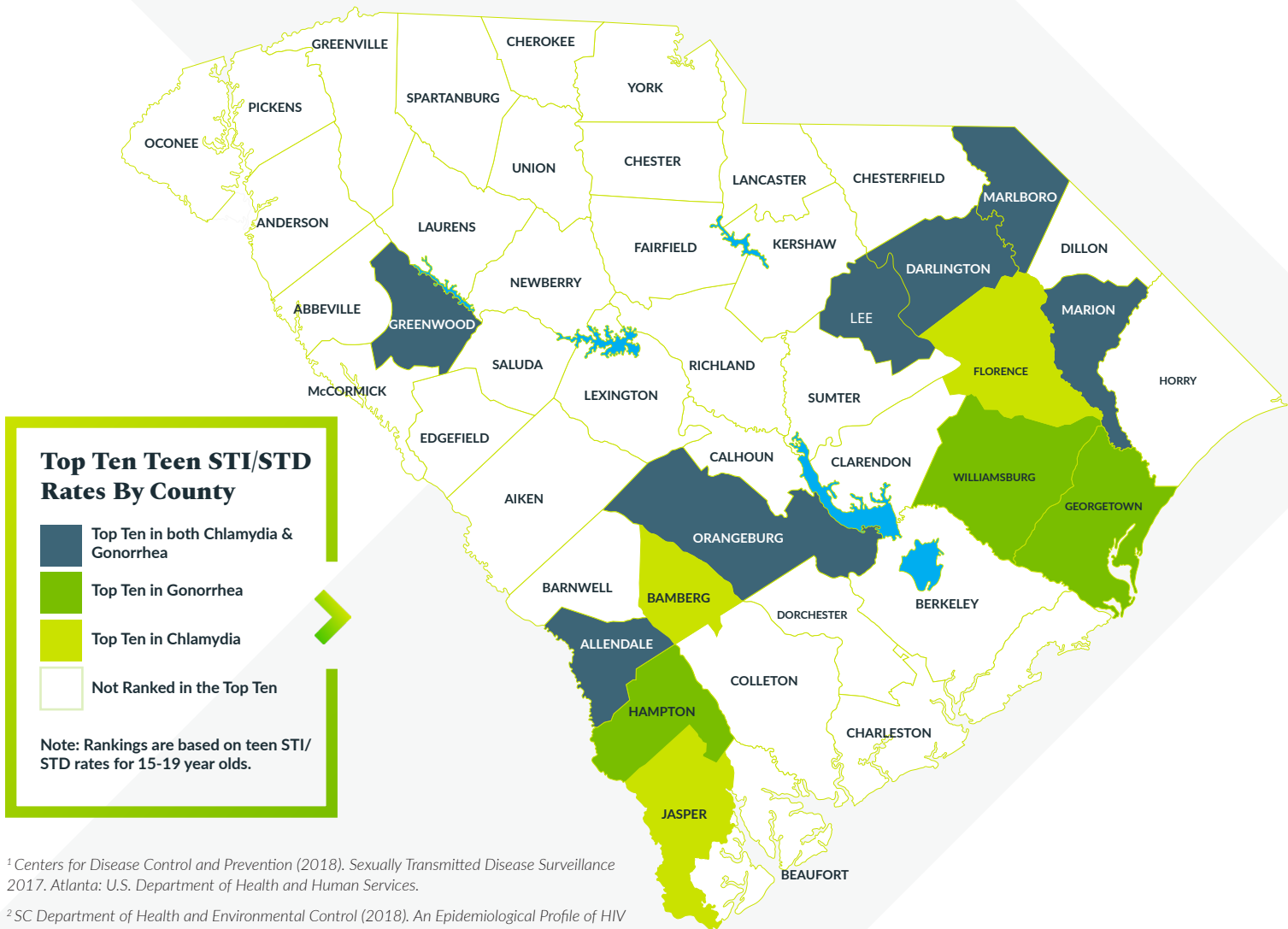


2018 South Carolina Teen STI/STD Rates

Although South Carolina's teen birth rate has declined by 70% since its peak in 1991, teens in SC are at substantial risk for contracting an STI/STD. In 2017, South Carolina was ranked 5th highest in the country for infection rates of Chlamydia and 4th in the country for gonorrhea among all ages. Additionally, over 56% of SC counties exceeded the national rates.¹ Adolescents (ages 15-24) accounted for 67% of chlamydia cases and 53% of all reported gonorrhea diagnoses.² According to the 2017 YRBS survey, 46% of sexually

active high school students reported NOT using a condom the last time they had sex.³ This underscores the importance of communities utilizing evidence-based interventions, providing access to clinical services, maintaining access to condoms, and increasing parent child communication. The South Carolina Campaign to Prevent Teen Pregnancy encourages educators, medical professionals, and parents or trusted adults to use evidence-based approaches to reduce teen births, sexually transmitted infections, and rates of associated risk behaviors.



¹ Centers for Disease Control and Prevention (2018). Sexually Transmitted Disease Surveillance 2017. Atlanta: U.S. Department of Health and Human Services.
² SC Department of Health and Environmental Control (2018). An Epidemiological Profile of HIV and AIDS in South Carolina 2018.
³ Kann, L., McManus, T., Harris W.A. et al. (2018). Youth Risk Behavior Surveillance – United States, 2017. MMWR Surveillance Summer 2018; 67(8): 63-68. Centers for Disease Control and Prevention.

2018 Chlamydia and Gonorrhea Numbers and Rates by County - Ages 15-19

COUNTY	Chlamydia			Gonorrhea		
	Cases	Rate	Rank	Cases	Rate	Rank
Abbeville	43	2511.7	38	13	759.3	31
Aiken	372	3594.9	24	135	1304.6	13
Allendale	44	8593.8	1	11	2148.4	1
Anderson	410	3168.7	30	130	1004.7	23
Bamberg	66	5636.2	3	7	597.8	38
Barnwell	65	4513.9	12	19	1319.4	12
Beaufort	281	2627.6	37	65	607.8	36
Berkeley	319	2257	42	76	537.7	42
Calhoun	27	3400.5	27	4	503.8	43
Charleston	674	3013.1	32	185	827	29
Cherokee	197	4867.8	9	82	2026.2	2
Chester	81	4203.4	15	12	622.7	35
Chesterfield	99	3433.9	26	24	832.5	28
Clarendon	93	4388.9	14	25	1179.8	17
Colleton	94	4130.1	17	20	878.7	26
Darlington	226	5092.4	8	80	1802.6	4
Dillon	104	5153.6	7	20	991.1	25
Dorchester	252	2431.3	40	56	540.3	41
Edgefield	42	2702.7	35	18	1158.3	19
Fairfield	49	3801.4	20	19	1474	8
Florence	364	4086.2	18	123	1380.8	9
Georgetown	125	3625.3	23	39	1131.1	21
Greenville	675	2132.9	44	236	745.7	32
Greenwood	179	3727.6	22	48	999.6	24
Hampton	51	4170.1	16	15	1226.5	16
Horry	569	3153.6	31	105	581.9	39
Jasper	68	4450.3	13	21	1374.3	10
Kershaw	85	2073.2	45	17	414.6	46
Lancaster	111	2320.2	41	24	501.7	44
Laurens	140	3277.2	29	36	842.7	27
Lee	58	5555.6	4	19	1819.9	3
Lexington	515	2877.9	33	122	681.8	34
Marion	104	5493.9	5	33	1743	5
Marlboro	86	5643	2	25	1640.4	7
McCormick	11	3741.5	21	4	1360.5	11
Newberry	138	5172.4	6	34	1274.4	14
Oconee	89	2149.2	43	25	603.7	37
Orangeburg	287	4839	10	103	1736.6	6
Pickens	174	1585.4	46	50	455.6	45
Richland	1314	3887.5	19	415	1227.8	15
Saluda	29	2485	39	9	771.2	30
Spartanburg	571	2777.5	34	151	734.5	33
Sumter	322	4697.3	11	78	1137.9	20
Union	57	3509.9	25	19	1170	18
Williamsburg	66	3372.5	28	20	1022	22
York	481	2657.8	36	102	563.6	40
South Carolina	10224	3173.1	-	2878	893.2	-

Data Source: SC Department of Health and Environmental Control (2018). SC Chlamydia and Gonorrhea Incidence Rates, Ages 15-19; 2019. HIV Surveillance and Technical Support Requested Report. Columbia, SC.

Note: Rate is calculated per 100,000 15-19 year olds.