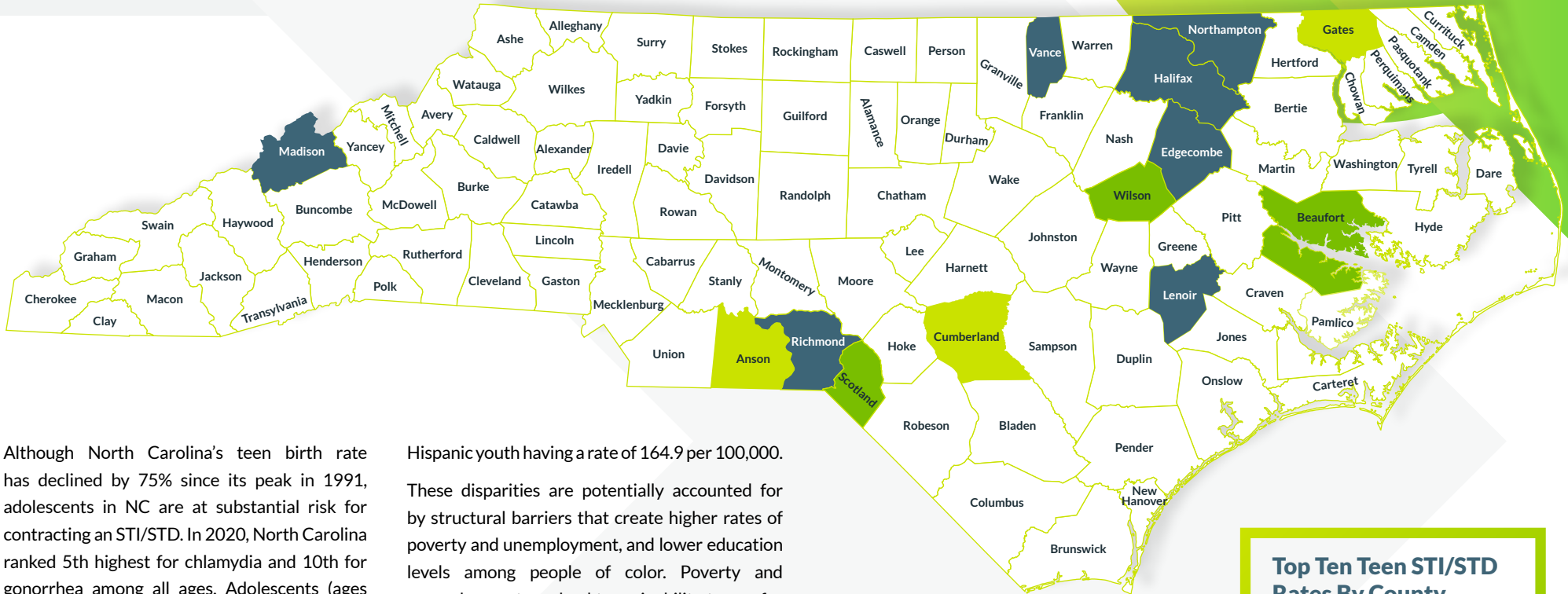


2020 North Carolina Teen STI/STD Rates



Top Ten Teen STI/STD Rates By County

- Top Ten in both Chlamydia & Gonorrhea
- Top Ten in Gonorrhea
- Top Ten in Chlamydia
- Not Ranked in the Top Ten

Note: Rankings are based on teen STI/STD rates for 15-19 year olds.

Although North Carolina’s teen birth rate has declined by 75% since its peak in 1991, adolescents in NC are at substantial risk for contracting an STI/STD. In 2020, North Carolina ranked 5th highest for chlamydia and 10th for gonorrhea among all ages. Adolescents (ages 15-24) accounted for 64 percent of chlamydia cases and 46 percent of all reported gonorrhea diagnoses. While all races are impacted by STIs, there are large differences between White, Black, and Hispanic teens’ STI rates. For example, in 2020, Black, Non-Hispanic teenagers aged 15-19 had a chlamydia rate of 4747.9 per 100,000, compared to White, Non-Hispanic youth who had rate of 907.5 per 100,000. The same pattern is seen with Gonorrhea cases, with Black, Non-Hispanic youth aged 15-19 having a rate of 1699.2 per 100,000 compared to White, Non-

Hispanic youth having a rate of 164.9 per 100,000. These disparities are potentially accounted for by structural barriers that create higher rates of poverty and unemployment, and lower education levels among people of color. Poverty and unemployment can lead to an inability to pay for medical care, which limits access to preventative care and education about sexual health with medical providers. Fact Forward encourages educators, medical professionals, and parents or trusted adults to use this document to engage their community in conversations surrounding the importance of STI/ STD education and prevention.

Centers for Disease Control and Prevention (2020). Sexually Transmitted Disease Surveillance 2019. Atlanta: U.S. Department of Health and Human Services. Retrieved from <https://gis.cdc.gov/grasp/nchhstpatlas/tables.html>

2020 Chlamydia and Gonorrhea Numbers and Rates by County - Ages 15-19

COUNTY	Chlamydia			Gonorrhea		
	Cases	Rate	Rank	Cases	Rate	Rank
Alamance County	277	2072.4	51	63	471.3	50
Alexander County	30	1450.0	74	6	290.0	67
Alleghany County	3	587.1	99	Data suppressed	Data suppressed	Data suppressed
Anson County	72	5755.4	3	14	1119.1	19
Ashe County	15	1124.4	82	2	149.9	83
Avery County	6	613.5	97	0	0.0	92
Beaufort County	95	3616.3	19	42	1598.8	6
Bertie County	33	3563.7	20	10	1079.9	22
Bladen County	47	2682.6	37	17	970.3	26
Brunswick County	102	1871.2	59	18	330.2	61
Buncombe County	262	1789.7	62	64	437.2	53
Burke County	92	1738.1	64	16	302.3	66
Cabarrus County	383	2390.6	42	74	461.9	51
Caldwell County	98	2131.4	49	20	435.0	55
Camden County	3	438.6	100	1	146.2	84
Carteret County	53	1541.6	69	11	320.0	62
Caswell County	27	2202.3	47	11	897.2	29
Catawba County	213	2054.0	53	28	270.0	70
Chatham County	67	1525.5	70	11	250.5	72
Cherokee County	11	806.5	90	3	219.9	75
Chowan County	27	3548.0	21	5	657.0	37
Clay County	4	724.6	94	0	0.0	92
Cleveland County	222	3410.1	23	59	906.3	28
Columbus County	82	2621.5	39	29	927.1	27
Craven County	136	2283.0	45	29	486.8	48
Cumberland County	986	4293.5	9	278	1210.5	13
Currituck County	20	1212.1	77	Data suppressed	Data suppressed	Data suppressed
Dare County	12	599.1	98	2	99.9	88
Davidson County	200	1932.4	56	62	599.0	41
Davie County	30	1134.6	81	6	226.9	74
Duplin County	93	2859.8	35	13	399.8	58
Durham County	649	3063.8	32	210	991.4	23
Edgecombe County	193	6276.4	2	64	2081.3	1
Forsyth County	870	3158.4	30	299	1085.5	20
Franklin County	92	2110.6	50	23	527.6	45
Gaston County	437	3078.8	31	118	831.3	31
Gates County	30	4942.3	7	8	1318.0	12
Graham County	12	2434.1	41	0	0.0	92
Granville County	80	2061.9	52	23	592.8	42
Greene County	48	4188.5	13	13	1134.4	18
Guilford County	1328	3164.6	29	415	988.9	24
Halifax County	137	4704.7	8	48	1648.4	4
Harnett County	231	2578.1	40	71	792.4	32
Haywood County	25	800.5	91	5	160.1	82
Henderson County	88	1458.2	73	12	198.8	80
Hertford County	70	4216.9	12	18	1084.3	21

Note: Rate is calculated per 100,000 15-19 year olds. * represents cases less than 5

2020 Chlamydia and Gonorrhea Numbers and Rates by County - Ages 15-19

COUNTY	Chlamydia			Gonorrhea		
	Cases	Rate	Rank	Cases	Rate	Rank
Hoke County	112	3515.4	22	27	847.5	30
Hyde County	4	1951.2	55	0	0.0	92
Iredell County	212	1714.7	65	76	614.7	40
Jackson County	47	1136.9	80	1	24.2	91
Johnston County	254	1703.6	66	54	362.2	59
Jones County	17	3703.7	18	1	217.9	76
Lee County	110	2724.1	36	26	643.9	38
Lenoir County	190	5560.4	4	61	1785.2	3
Lincoln County	96	1839.8	60	15	287.5	68
McDowell County	23	1189.9	78	4	206.9	79
Macon County	10	718.4	95	3	215.5	77
Madison County	65	5480.6	5	19	1602.0	5
Martin County	29	1175.0	79	3	121.6	86
Mecklenburg County	2294	3232.7	27	700	986.4	25
Mitchell County	6	783.3	92	0	0.0	92
Montgomery County	36	2136.5	48	7	415.4	57
Moore County	80	1496.4	72	18	336.7	60
Nash County	182	2909.7	34	73	1167.1	16
New Hanover County	237	1583.5	68	38	253.9	71
Northampton County	45	5214.4	6	12	1390.5	10
Onslow County	384	2378.7	43	68	421.2	56
Orange County	140	948.0	88	25	169.3	81
Pamlico County	19	3356.9	26	3	530.0	43
Pasquotank County	91	3360.4	25	14	517.0	47
Pender County	66	1837.4	61	19	529.0	44
Perquimans County	21	3211.0	28	5	764.5	33
Person County	60	2642.0	38	10	440.3	52
Pitt County	546	3800.9	16	168	1169.5	15
Polk County	7	712.8	96	3	305.5	64
Randolph County	147	1587.1	67	29	313.1	63
Richmond County	117	4277.9	10	40	1462.5	9
Robeson County	325	3724.5	17	105	1203.3	14
Rockingham County	117	2263.9	46	36	696.6	35
Rowan County	228	2345.2	44	51	524.6	46
Rutherford County	72	1895.7	58	18	473.9	49
Sampson County	76	1908.1	57	29	728.1	34
Scotland County	87	4150.8	14	38	1813.0	2
Stanly County	78	2029.1	54	26	676.4	36
Stokes County	32	1324.5	75	5	207.0	78
Surry County	43	1005.6	87	10	233.9	73
Swain County	9	1115.2	84	1	123.9	85
Transylvania County	14	812.5	89	2	116.1	87
Tyrrell County	2	1315.8	76	Data suppressed	Data suppressed	Data suppressed
Union County	311	1504.7	71	56	271.0	69
Vance County	175	6299.5	1	43	1547.9	7
Wake County	1418	1782.9	63	347	436.3	54

Note: Rate is calculated per 100,000 15-19 year olds. * represents cases less than 5

2020 Chlamydia and Gonorrhea Numbers and Rates by County - Ages 15-19

COUNTY	Chlamydia			Gonorrhea		
	Cases	Rate	Rank	Cases	Rate	Rank
Warren County	32	3372.0	24	13	1369.9	11
Washington County	24	4000.0	15	7	1166.7	17
Watauga County	42	728.9	93	5	86.8	89
Wayne County	229	2957.9	33	48	620.0	39
Wilkes County	44	1119.3	83	12	305.3	65
Wilson County	222	4228.6	11	78	1485.7	8
Yadkin County	24	1111.6	85	1	46.3	90
Yancey County	10	1038.4	86	0	0.0	92
North Carolina	17,379	2504.0		4,716	679.5	

Note: Rate is calculated per 100,000 15-19 year olds. * represents cases less than 5