

FACT FORWARD

ADVANCING REPRODUCTIVE HEALTH

2021
ANNUAL REPORT



Letter from the CEO



Dear reader,

Throughout 2021, Fact Forward continued to keep young people and their families at the forefront of our work. Through this commitment, we have made great strides in adolescent reproductive health and healthcare access. The annual report always allows me the opportunity to pause and reflect on the successes of Fact Forward as well as

look forward to future goals and achievements. I can say many great things about what we did in 2021, but I'm especially proud of our dedication to avoiding complacency.

Although South Carolina's teen birth rate has declined by 73 percent since its peak in 1991, adolescents in SC are at substantial risk for contracting an STI. SC ranked 4th highest for both chlamydia and gonorrhea among all ages with ages 15-24 accounting for 66 percent of chlamydia cases and 48 percent of reported gonorrhea diagnoses. These numbers might feel alarming, but they are exactly why Fact Forward continues to think strategically and thoughtfully about our work.

Throughout this report, you'll see just how many people our work has impacted and why we continue to forge ahead in the ever-changing space of reproductive health. I have talked about the work Fact Forward does, but I cannot speak about it without acknowledging the partners, advocates, stakeholders, and supporters that make it all possible. It has been and always will be a collective effort that makes such a difference in keeping young people and their communities healthy.

As we move forward into another year, we endeavor to remember two things. First, all persons deserve the right to make healthy decisions about their bodies and futures. And second, it is a fact that the health and economic well-being of individuals, communities, and the state of South Carolina is better off with access to high-quality, reproductive healthcare. We are committed to advocating for young people and families by supporting education and policies that foster healthy communities. Thank you for your continued support and for making our work possible.

E.A. "Beth" De Santis, MSN
Chief Executive Officer



Board of Directors

- Rev. Dr. Terry Alexander
- Frank Braddock
- Kinn Elliott
- La-Diné Gamble
- Deborah Hopla
- Sarah Hughes (New 2021)
- Sarah Kershner
- Brett MacGargle
- Yolanda McCray (New 2021)
- Cory Manning
- Ali B. Mansaray (New 2021)
- Kristy Stoneburner
- Dr. Suzan Boyd, Emeritus
- Dr. Don Flowers, Emeritus
- Dr. Grant Warren, Emeritus

Board Leadership



Roy Shelley
Board Chair

Hope Garcia
Vice Chair

Jilvonnice M. Littlejohn Bostick
Secretary/Treasurer

April L. Borkman
Immediate Past Chair

Who We Are

Fact Forward strives to build and maintain an organization where our staff and board share a common passion, commitment, and pride in the work they do. New people bring fresh perspectives, ideas, and solutions. In 2021, we moved that needle forward through new board members and new roles.

Our Mission:

Fact Forward's mission is to improve the health and economic well-being of individuals, communities, the state of South Carolina, and beyond by preventing teen pregnancy and advancing adolescent reproductive health.

New Board Members



Sarah Hughes



Yolanda McCray



Ali B. Mansaray

Staff Promotions 2021

Mallory Gibson
Research and Evaluation Coordinator



**Get Connected.
Stay Informed.
Make a
Difference.**

@FactForwardOrg

/FactForwardOrg

/FactForward

@FactForwardOrg

4702 Colonial Drive,
Columbia, SC 29203

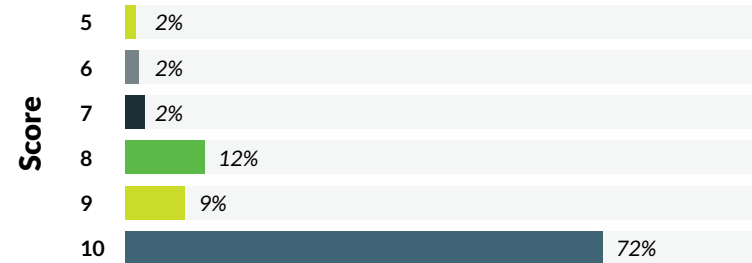
803-771-7700

FactForward.org

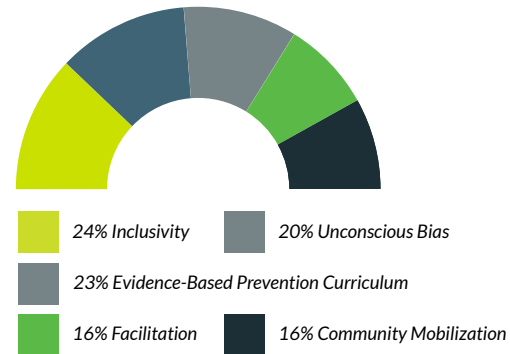
2021 Trainings

In 2021, Fact Forward provided 34 trainings and 345 attendees completed 838 CEU hours.

On a scale of 0-to-10, 82% of participants either rated the training a 9 or a 10 indicating that there is a high likelihood that they would recommend the training to a friend or colleague. The Average score was 9.6.



Topics attendees are interested in:



Attendee survey results:

Training was either good or excellent.

100%

Trainer's performance was good or excellent.

100%

Activities were useful in building their skills.

99%

Agreed or strongly agreed that teaching methods were effective.

99%

Thought the content met their expectations.

97%

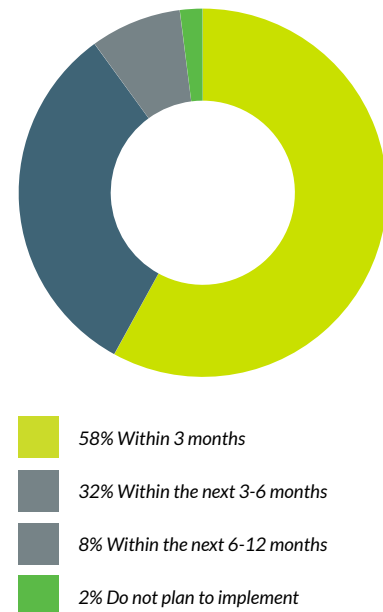
Agreed, or strongly agreed that the trainer demonstrated expertise, was engaging, well-organized and created a comfortable learning environment.

97%

Agreed or strongly agreed that their knowledge and skills in the course content increased as a result of the training.

93%

Participants plan to implement their learned skills:



Organizational Goals for Diversity, Equity, Inclusion, and Belonging (DEIB)

Following a year of racially motivated events and collective trauma, Fact Forward's leadership identified a need to support staff on their diversity, equity, inclusion, and belonging (DEIB) journeys. Beth Ruffin, from the Everyday Inclusionist™, facilitated trainings and discussions on anti-racism, allyship, accessibility, LGBTQ+ terminology, and other key DEIB topics.

The goal of our DEIB effort is threefold:



GOAL 1: Workplace Inclusion

Fact Forward will foster a culture that encourages collaboration, flexibility, and fairness where all employees feel included, valued, and recognized for their potential and accomplishments.



GOAL 2: Open Communications

Fact Forward will strengthen its communications to include DEIB-related content in a transparent, authentic way to build trust among all employees. Fact Forward aims to address and heal previous harms and create an environment prohibiting future harm.



GOAL 3: Sustainability & Accountability

Fact Forward will identify and break down systemic barriers to full inclusion by embedding DEIB in policies and practices, equipping leaders with the ability to manage and be accountable for the results. Fact Forward aspires to be an example and a model for the nonprofit community committed to fostering inclusive environments.

Our DEIB efforts have led to several lessons learned. The most important of these is that each person has a unique perspective and experience with systems of oppression. Everyone has been impacted by these systems and suffers trauma throughout life. It's our responsibility, individually, to listen with an open heart and mind to the stories of others so that we can meet in a commonplace.

DEIB work can be uncomfortable, but it is worth the effort. As we move into another year, our commitment is to create a culture that supports our employees through respectful and meaningful engagement that influences how we show up and do this important work.



How did attendees hear about Fact Forward's training?

45%
Supervisor

10%
Colleague

22%
Digitally
(website, email, social)

19%
Fact Forward Staff

"The sessions were great, especially the teaching opportunity. I learned a lot from input from others as well."

"Trainers presented and implemented the program effectively and worthwhile."

"The trainers were absolutely amazing. I hope to see them in another training session."

South Carolina Teen Birth Trends

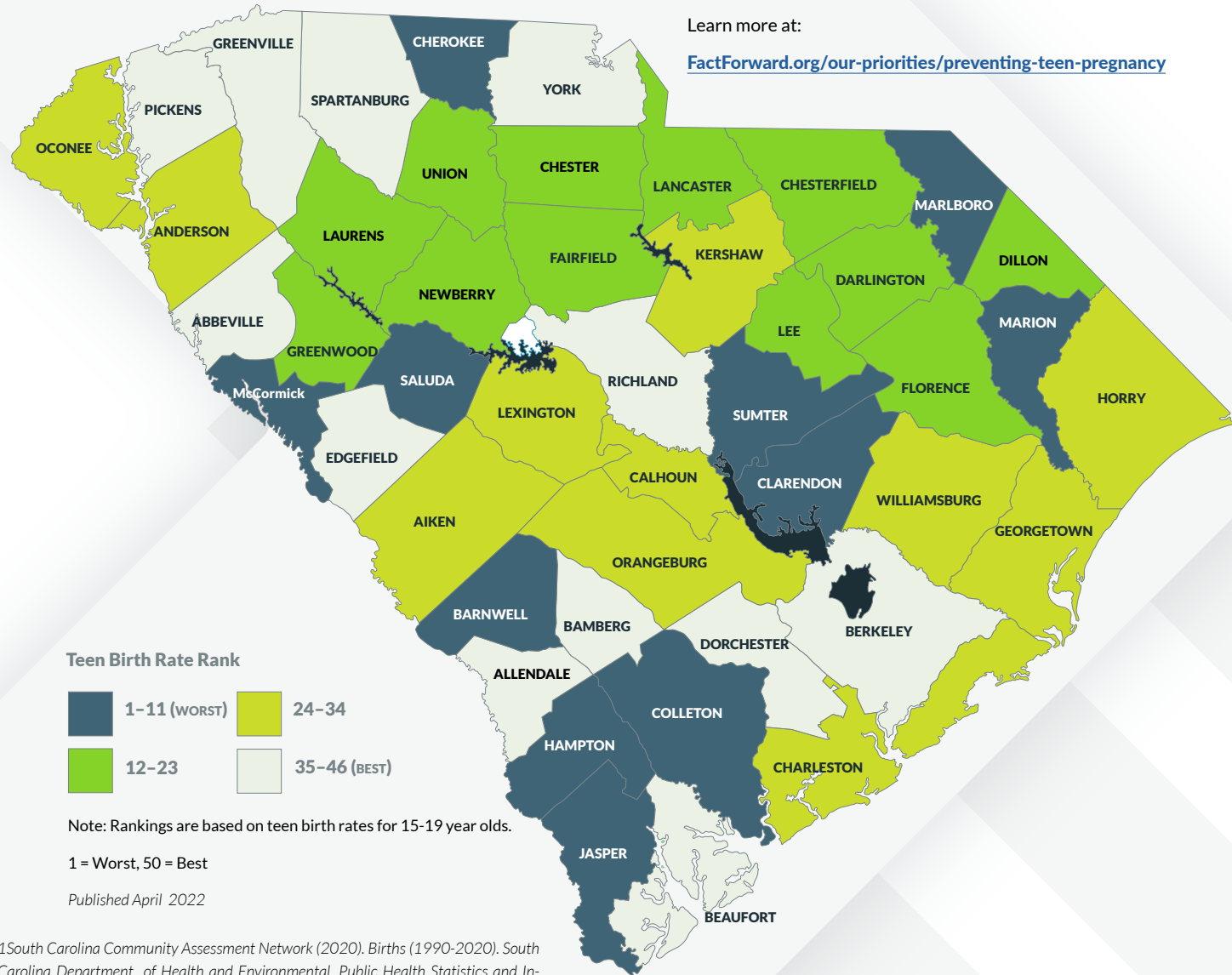
South Carolina's teen birth rate has declined 73% since peaking in 1991, continuing decades of success for communities across the state. Most significantly, the teen birth rate in South Carolina decreased by 11% between 2019 and 2020. This makes the teen birth rate for 15-19 year olds 19.3 per 1,000 females.

From 2019-2020, Hispanic teens (15-19) were the only teen demographic to experience an increase. Black teens experienced a 7% decrease and white teens experienced a 20% decrease. Since 2002, Hispanic teens have had the highest teen birth rates, with rates consistently above the state rate and rates of white and Black teens.

These disparities are potentially accounted for by structural barriers that create higher rates of poverty and unemployment, and lower education levels among people of color. Poverty and unemployment can lead to an inability to pay for medical care, which limits access to preventative care including contraceptives and education about sexual health with medical providers. Through resources such as this, Fact Forward encourages communities and youth-serving professionals to not only engage in conversation about the ranking of teen births in South Carolina counties, but also address the social determinants of health that influence unintended teen births in our state.

Learn more at:

[FactForward.org/our-priorities/preventing-teen-pregnancy](https://factforward.org/our-priorities/preventing-teen-pregnancy)



1South Carolina Community Assessment Network (2020). Births (1990-2020). South Carolina Department of Health and Environmental Public Health Statistics and Information Services: Division of Biostatistics and Health GIS. [https://apps.dhec.sc.gov/Health/scan/scan/index.aspx?Sales, J.M., Newton-Levinson, A., Swartzendruber, A.L. \(2020\). Racial Disparities in STIs Among Adolescents in the USA. In: Hussen, S. \(eds\) Sexually Transmitted Infections in Adolescence and Young Adulthood. Springer, Cham. https://doi.org/10.1007/978-3-030-20491-4_3](https://apps.dhec.sc.gov/Health/scan/scan/index.aspx?Sales, J.M., Newton-Levinson, A., Swartzendruber, A.L. (2020). Racial Disparities in STIs Among Adolescents in the USA. In: Hussen, S. (eds) Sexually Transmitted Infections in Adolescence and Young Adulthood. Springer, Cham. https://doi.org/10.1007/978-3-030-20491-4_3)

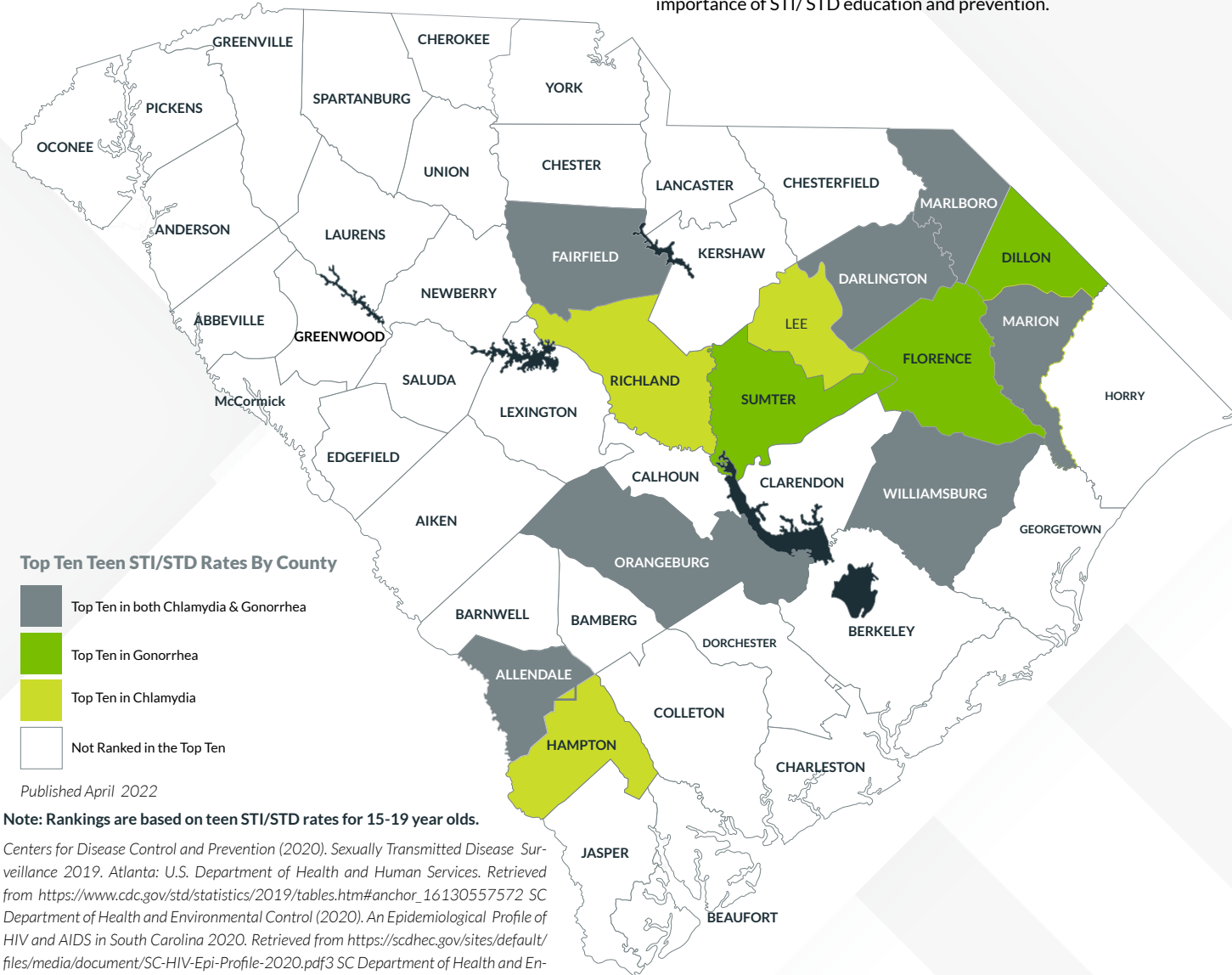
Rank	County	Ages 15-19		Ages 15-17		Ages 18-19	
		Number	Rate	Number	Rate	Number	Rate
1	Hampton	25	47.3	5	15.8	20	94.3
2	Colleton	45	42.3	12	18.8	33	77.6
3	Jasper	31	42	6	13.5	25	84.7
4	Marlboro	23	35.3	5	12.8	18	69.2
5	McCormick	5	34.5	1	11.5	4	69
6	Saluda	17	34.3	4	13.4	13	65.7
7	Barnwell	23	34.1	3	7.4	20	74.3
8	Sumter	108	32.9	32	16.2	76	57.9
9	Cherokee	60	32.7	12	10.9	48	65.5
10	Marion	29	32.5	7	13.1	22	61.6
11	Clarendon	28	31.5	9	16.9	19	53.5
12	Union	22	30	5	11.3	17	58
13	Lee	14	29.8	4	14.1	10	53.5
14	Darlington	63	29.4	15	11.7	48	55.9
14	Dillon	30	29.4	6	9.8	24	59
16	Florence	124	28.6	29	11.1	95	54.8
17	Fairfield	15	28	8	25	7	32.6
18	Laurens	55	27	10	8.2	45	55.2
19	Greenwood	62	25.9	12	8.4	50	52.4
20	Chesterfield	33	25.4	9	11.5	24	46.1
21	Chester	22	24.5	3	5.6	19	52.8
22	Newberry	29	23.5	7	9.5	22	44.5
23	Lancaster	57	23	18	12.1	39	39.3
24	Orangeburg	63	21.6	12	6.9	51	43.8
25	Calhoun	8	21.3	2	8.8	6	40
26	Williamsburg	18	21.2	2	3.9	16	47.2
27	Aiken	108	21	19	6.2	89	43.3
28	Georgetown	32	20.4	10	10.6	22	35.1
29	Kershaw	39	19.6	9	7.5	30	37.8
30	Anderson	123	19.4	26	6.8	97	38.2
30	Oconee	42	19.4	10	7.7	32	37
32	Lexington	169	18.7	42	7.8	127	35.2
33	Charleston	202	17.9	58	8.5	144	31.8
33	Horry	166	17.9	34	6.1	132	35.6
35	Spartanburg	186	17.7	45	7.1	141	33.5
36	Allendale	4	17.5	1	7.2	3	33.3
37	Berkeley	121	17.3	23	5.5	98	35
38	Bamberg	9	17.2	3	9.5	6	28.8
39	Greenville	260	16	64	6.5	196	30.1
40	Beaufort	77	15.1	19	6.2	58	28.5
41	Edgefield	11	15	2	4.5	9	30.7
42	Richland	227	14.2	66	6.9	161	25.2
43	Pickens	78	13.8	21	6.2	57	25.2
44	Dorchester	70	13.5	19	6.1	51	24.6
44	York	129	13.5	38	6.6	91	23.7
46	Abbeville	7	8.9	1	2.1	6	19
	Statewide South Carolina	3,069	19.3	748	7.8	2,321	36.4

Note: Counties are ranked from highest to lowest teen birth rate for 15-19 year olds. Rate is calculated per 1,000 females. Rates calculated with small numbers are unreliable and should be used cautiously.

South Carolina Teen STI/STD Rates

Although South Carolina's teen birth rate has declined by 73% since its peak in 1991, adolescents in SC are at substantial risk for contracting an STI/STD. In 2019, the most recent national data, South Carolina ranked 4th highest for both chlamydia and gonorrhea among all ages. Additionally, adolescents (ages 15-24) accounted for 66 percent of chlamydia cases and 48 percent of all reported gonorrhea diagnoses. While all races are impacted by STIs, there are large differences between white teens and Black and Hispanic teens' STI rates. For example, in 2020, Black, Non-Hispanic teenagers aged 15-19 had 2,504 Chlamydia cases per 100,000, compared to White, Non-Hispanic youth who had 627 Chlamydia cases

per 100,000. The same pattern is seen with Gonorrhea cases, with Black, Non-Hispanic youth aged 15-19 having a rate of 953 cases per 100,000 compared to White, Non-Hispanic youth having a rate of 155 cases per 100,000. These disparities are potentially accounted for by structural barriers that create higher rates of poverty and unemployment, and lower education levels among people of color. Poverty and unemployment can lead to an inability to pay for medical care, which limits access to preventative care and education about sexual health with medical providers. Fact Forward encourages educators, medical professionals, and parents or trusted adults to use this document to engage their community in conversations surrounding the importance of STI/ STD education and prevention.



Top Ten Teen STI/STD Rates By County

- Top Ten in both Chlamydia & Gonorrhea
- Top Ten in Gonorrhea
- Top Ten in Chlamydia
- Not Ranked in the Top Ten

Published April 2022

Note: Rankings are based on teen STI/STD rates for 15-19 year olds.

Centers for Disease Control and Prevention (2020). Sexually Transmitted Disease Surveillance 2019. Atlanta: U.S. Department of Health and Human Services. Retrieved from https://www.cdc.gov/std/statistics/2019/tables.htm#anchor_16130557572 SC Department of Health and Environmental Control (2020). An Epidemiological Profile of HIV and AIDS in South Carolina 2020. Retrieved from <https://scdhec.gov/sites/default/files/media/document/SC-HIV-Epi-Profile-2020.pdf> SC Department of Health and Environmental Control (2020). SC Chlamydia and Gonorrhea Rates, Ages 15-19, 2020. Requested from SCDHEC Division of Surveillance, Assessment & Evaluation Data4 Sales, J.M., Newton-Levinson, A., Swartzendruber, A.L. (2020). Racial Disparities in STIs Among Adolescents in the USA. In: Hussien, S. (eds) Sexually Transmitted Infections in Adolescence and Young Adulthood. Springer, Cham. https://doi.org/10.1007/978-3-030-20491-4_3

Chlamydia and Gonorrhea Numbers and Rates by County

Ages 15 - 19

County	Chlamydia			Gonorrhea		
	Cases	Rate	Rank	Cases	Rate	Rank
Abbeville	38	2348.6	34	23	1421.5	11
Aiken	285	2765.1	28	72	698.6	32
Allendale	34	6953	1	11	2249.5	1
Anderson	235	1833.6	44	80	624.2	38
Bamberg	23	2051.7	41	7	624.4	37
Barnwell	44	3214	21	16	1168.7	18
Beaufort	237	2159.8	37	48	437.4	43
Berkeley	301	2021.6	43	88	591	40
Calhoun	16	2067.2	40	6	775.2	29
Charleston	650	2865.2	25	249	1097.6	20
Cherokee	132	3408.2	17	36	929.5	24
Chester	63	3314	19	20	1052.1	21
Chesterfield	89	3251.7	20	17	621.1	39
Clarendon	77	3763.4	12	28	1368.5	14
Colleton	74	3372.8	18	23	1048.3	22
Darlington	212	4942.9	5	73	1702	3
Dillon	75	3651.4	14	36	1752.7	2
Dorchester	319	3008.9	22	96	905.5	25
Edgefield	39	2452.8	30	6	377.4	45
Fairfield	56	4593.9	6	18	1476.6	10
Florence	332	3719.5	13	145	1624.5	6
Georgetown	80	2409.6	33	26	783.1	28
Greenville	696	2149.5	39	227	701.1	31
Greenwood	125	2690.5	29	65	1399.1	13
Hampton	51	4501.3	7	14	1235.7	17
Horry	561	3008	23	156	836.5	27
Jasper	52	3446	16	17	1126.6	19
Kershaw	100	2446.2	31	40	978.5	23
Lancaster	113	2267.3	35	22	441.4	42
Laurens	118	2850.9	26	56	1353	15
Lee	65	6429.3	2	13	1285.9	16
Lexington	398	2151.8	38	99	535.3	41
McCormick	6	2027	42	*	337.8	46
Marion	83	4462.4	8	29	1559.1	8
Marlboro	69	4967.6	4	21	1511.9	9
Newberry	91	3472	15	19	724.9	30
Oconee	60	1395	45	30	697.5	33
Orangeburg	252	4261.8	10	98	1657.4	5
Pickens	152	1305.6	46	49	420.9	44
Richland	1417	4292.9	9	462	1399.7	12
Saluda	26	2427.6	32	7	653.6	35
Spartanburg	457	2160.8	36	136	643	36
Sumter	257	3838.7	11	107	1598.2	7
Union	45	2892	24	14	899.7	26
Williamsburg	95	5143.5	3	31	1678.4	4
York	526	2846.2	27	123	665.5	34
South Carolina	9380	2889.2	-	3000	924.0	-

Note: Rate is calculated per 100,000 15-19 year olds. * represents cases less than 5

SC Department of Health and Environmental Control (2020). SC Chlamydia and Gonorrhea Rates, Ages 15-19, 2020. Requested from SCDHEC Division of Surveillance, Assessment & Evaluation Data

Giving Back

Our partners across the state are a vital component in reaching youth in South Carolina. We fund a variety of organizations to implement evidence-based and evidence-informed programs and to reach youth and parents through innovative outreach events. **\$1,689,790.51** in funding was distributed to 67 organizations, including:

Community Grants

- A.I.R. Consulting & Coaching
- Aiken County Public Schools
- Omicron Iota Lambda Chapter of Alpha Phi Alpha Fraternity, Inc
- Anderson Alternative School
- Anderson School District 1
- Anderson School District 2
- Anderson School District 3
- Anderson School District 4
- Anderson School District 5
- Bloom Upstate
- Boys and Girls Club of the Pee Dee
- CareSouth Carolina
- Carolina Children's Attention Home
- Children's Trust of South Carolina
- Clafin University
- Coastal Carolina University
- College of Charleston
- Columbia Urban League
- Community Wellness Group
- Darlington County First Steps to School Readiness
- SCDHEC Upstate Anderson
- SCDHEC Midlands Region Aiken
- SCDHEC Lowcountry Orangeburg
- Dillon County Boys and Girls Youth Center
- Dillon School District Four
- Dramatic Coffee Beans
- Eau Claire Cooperative
- Florence School District Three
- Foothills Alliance
- Francis Marion University
- Gurls Empowerment Network
- Helping Hands
- J.U.M.P.S.
- Joseph H. Neal Health Collaborative
- Lowcountry Youth Services
- Medical Ministries
- New Foundations Home for Children
- OCAB Community Action, Inc
- Orangeburg County School District
- Palmetto Place Shelter
- Pendleton Place
- Renaissance Academy- Formerly Anderson Alternative SC
- Alpha Phi Alpha Fraternity, Inc
- SC Department of Juvenile Justice
- SC Empowerment
- Sowing Seeds of the Midlands
- Tamassee DAR School
- The Community Resource Depot
- The Hive Community
- The S.C. Center for Fathers and Families
- United Way of Anderson County
- University of South Carolina
- Voorhees College
- Winthrop University



2021 Community Sponsorships

The South Carolina Department of Social Services funded 14 community sponsorship events & 4 implementation grants impacting 1,032 people in 17 South Carolina counties.

Teen Dating Violence Month	# Of Participants	Counties Reached
Tea Time for Teens	100	Marlboro
Upstate Circle of Friends	75	Greenville
Greenwood Alumnae Chapter of Delta Sigma Theta Sorority, Inc	12	Greenwood

Sex Ed for All Month	# Of Participants	Counties Reached
Bridge Builders	33	York
A Safe Place for Grace	71 In person 188 Virtual	Dillon
Teen Expression	3	Orangeburg/Dorchester

Let's Talk Month	# Of Participants	Counties Reached
Berkeley County First Steps	14	Berkeley
Pee Dee Healthy Start	74	Florence
Kingston Church	21	Lexington
Mt. Olive on the Hill AME Church	54	Richland
Pernell Community Center	11	Dillon
Trinity United Methodist Church	37	Orangeburg

Implementation Grants	# Of Participants	Counties Reached
The Coalition for Family Enrichment in Marlboro County	84	Marlboro
The Family Resource Center	103	Kershaw
The Social Change Initiative	86	Greenwood, Abbeville, McCormick, Laurens
Youth Generation Matters	66	Allendale

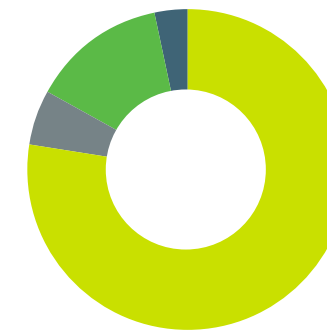
FY 2020-21 Financial Highlights

Fact Forward is funded through multiple sources including federal, state, and private grants in addition to individual contributions and sponsorships.

Fact Forward's revenue totaled 4,664,959.19, and our expenses totaled 4,742,008.87 for fiscal year 2021.

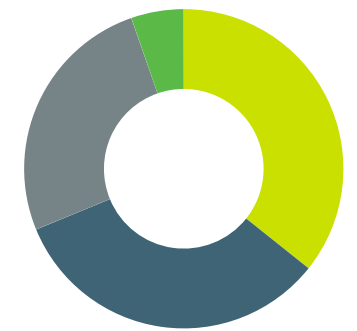
Revenue

- Federal Grants
\$3,616,082.74
- State Grants
\$636,775.03
- Private/Foundation Grants
\$261,576.98
- Contributions /Sponsorships/
Generated Income
\$150,524.44



Expenses

- Personnel
\$1,569,235.12
- Giving
\$1,693,361.76
- Program
\$1,226,884.66
- General & Administrative
\$252,527.33





2021 ANNUAL REPORT

4702 Colonial Drive
Columbia, SC 29203

Special Thanks To

